



# VT Hackney

A company of VT Systems



## Model TC1482 Heavy Duty Rescue Trailer

# *Hackney*

Sourcewell   
Formerly NJPA

Awarded Contract

Contract # 022818-VTH

TC-1482

Hackney Emergency Vehicles

NJPA - HACKNEY TC1482 TRAILER WITH REAR COMMAND

Sales Rep:

Terms:

Drawing #:

Est. Delivery Date: / /

Customer PO #:

Penalty:

Customer #:

QPF #:

Exp. Date: 03/09/2018

Quote No: 10025-0001

BODY: XTC100 NJPA TC1482 TRAILER W/REAR PERSONNEL

08/17/2018

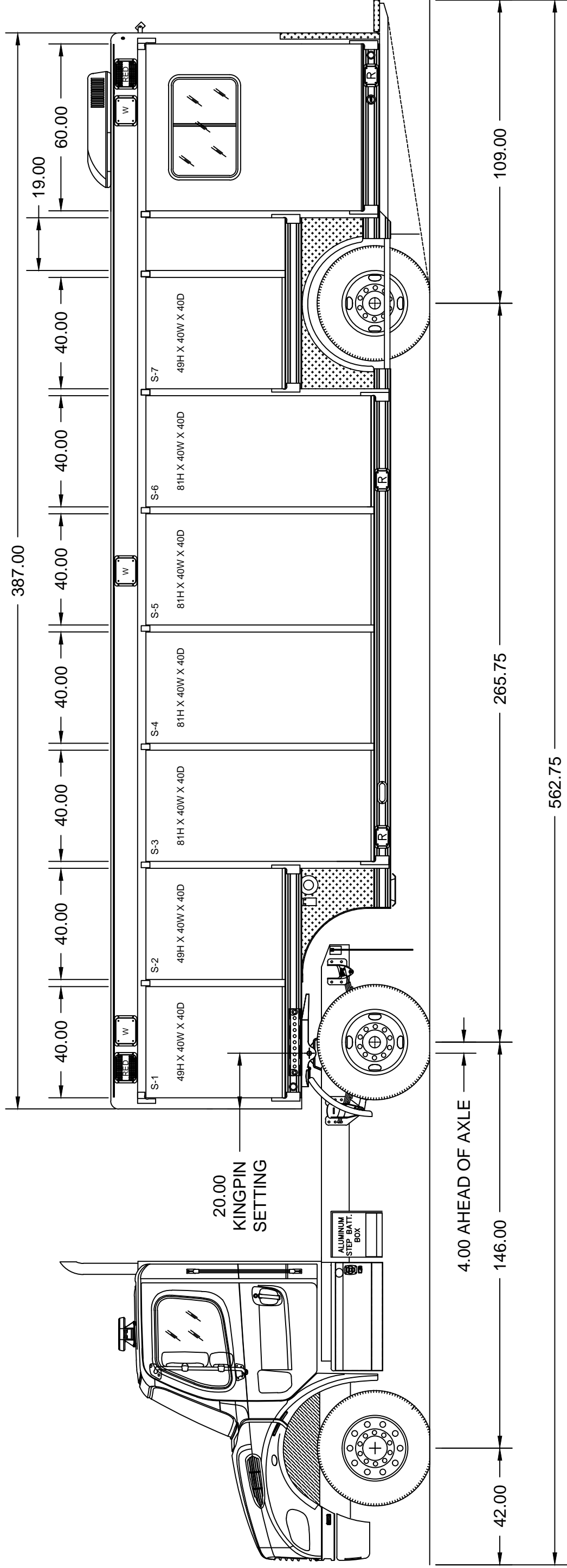
Page 1

PART NO	DESCRIPTION	QTY
	== NJPA TC1482 TRAILER W/REAR PERSONNEL - ==	1
	== QW RELEASE - Effective 01-02-18 ==	1
	<b>CAB and CHASSIS</b>	<b>1</b>
10-02-1800	FREIGHTLINER M2-112 - TRACTOR - 2-DR CUMMINS L9 - 350HP	1
10-19-0100	FLUID LEVEL DATA - ELECTRONIC DISPLAY	1
10-19-1018	VDR Supplied with Chassis (Freightliner only)	1
10-19-1025	"MUST BE SEATED AND BELTED" - WARNING PLATE	1
10-19-1045	WARNING PLATE - VEHICLE SPECIFICATION DATA	1
10-19-1075	"DO NOT WEAR HELMET WHILE SEATED" - WARNING PLATE	1
10-41-0000	HOLDER - UNIVERSAL HELMET - ZIAMATIC (EA)	2
11-16-0220	BATTERY CONDITIONER - PROGRESSIVE DYNAMICS	1
11-17-0020	SHOREPOWER INLET, 20 AMP W/COVER & FEMALE PLU	1
11-31-5005	ENGINE COMP'T LIGHT - Centered Under Hood	1
11-33-0802	GROUND LIGHTS - TECNIQ LED - FRONT CAB DOOR (PR)	1
12-00-1010	MUD FLAPS - RE-INSTALL CHASSIS OEM	1
12-11-1900	ULTRA-LOW SULFUR DIESEL FUEL ONLY LABEL	1
12-11-1950	DEF FLUID LABEL	1
12-57-0022	TIRE PRESSURE MONITORING - REALWHEELS AIRSECURE - 10-WHL	1
	<b>BODY and FRAME OPTIONS</b>	<b>1</b>
20-09-0000	TRAILER & FRAME - SINGLE AXLE	1
20-19-2000	TRAILER BODY - TC1482 - 14 COMPARTMENT W/ REAR COMMAND	1
20-49-9000	OVERALL HEIGHT PLATE	1
20-61-0200	ROLLERS, STAINLESS STEEL ROLL-UP DOOR - ILOS - (Ea. Comp't Door)	1
20-70-0110	DOOR, SIDE PERSONNEL ENTRANCE - up to 83" H	1

PART NO	DESCRIPTION	QTY
20-70-0150	WINDOW, DOOR - 30"H X 18"W - SLIDING - black painted or clear anodized frame (EA)	1
20-70-0185	WINDOW, BODY 30"H X 18"W - SLIDING - Powdercoated frame (EA).	2
20-71-0010	WHEELHOUSING SKIRT PANEL - BRIGHT ALUMINUM TREADPLATE	1
20-71-0320	FENDERETTES, STAINLESS STEEL (PR)	1
21-01-1120	INTERIOR WALLS, CEILING & INSULATION - KEMLITE -	1
21-08-0555	COMMS CONSOLE - 88"	1
21-10-1000	DESK, DRAWERS and CABINETS - INTERIOR COMMAND MODULE	1
21-20-0100	CHAIR, SWIVEL LOW BACK TASK (EA)	2
21-30-1005	FLOORING - LONSEAL SAFETY - 5-ft	1
<b>EXTERIOR BODY OPTIONS</b>		<b>1</b>
22-21-0000	STONE GUARDS, FRT & REAR - D/P CORNERS (4)	1
22-25-2000	BUMPER, REAR STEP BRIGHT TREAD PLATE	1
22-25-6200	STEP, ELECTRIC, AUTO RETRACT (RV Type)	1
22-31-3500	STEP, DROP DOWN FOR TRAILER (EA)	4
22-33-1000	STEP, REAR WHEEL ALUMINUM STEP (PR)	1
22-40-0090	WHEEL CHOCK - ZICO COLLAPSIBLE TYPE (EA)	2
22-40-0100	HOLDER FOR WHEEL CHOCK - ZICO SQCH-44 (EA)	2
22-50-3010	LICENSE PLATE INSERTS & LIGHT	1
22-51-1000	MUD FLAPS, REAR (PR) BLACK RUBBER	1
<b>INTERIOR BODY OPTIONS</b>		<b>1</b>
23-11-0506	UNISTRUT "C" CHANNEL (set of 4) - up to 50"L	6
23-11-0507	UNISTRUT "C" CHANNEL (set of 4) - Up to 70"L	8
23-11-0550	RECESSED ADJUSTABLE SHELF TRACK (EA)	14
<b>EXTERIOR BODY OPTIONS</b>		<b>1</b>
<b>PAINT and GRAPHICS</b>		<b>1</b>
40-00-0200	PAINT TRAILER - PRIMARY COLOR	1
42-10-3250	PAINT WHEELS - (10) OUTER SURFACES ONLY	1
42-12-0000	TOUCH UP PAINT - ONE QUART	1
42-90-0500	COMPARTMENT WALLS/FLOORS COATING - MULTISPEC (ea. comp't)	14
42-99-0010	UNDERCOATING CAB, TRAILER FRAME & BODY	1
43-20-3000	STRIPE, REFLECTIVE 6" PRICE PER FOOT REQS DWG	86
43-20-8030	CHEVRON STRIPE - REAR TRAILER BODY - HEAVY RESCUE	1
43-20-8120	REFLECTIVE STRIPING ACROSS FACE OF BUMPER	1
<b>12VDC ELECTRICAL SYSTEM</b>		<b>1</b>
50-00-1310	ELECTRICAL SYSTEM - V-MUX - TRACTOR APP.	1
50-00-2110	PANAVISE SWIVEL MOUNTING BRACKET	1
50-03-0001	TEMPERATURE SENSOR & READ-OUT - EXTERNAL	1
50-05-0000	AMP DRAW REPORT - NFPA 1901, Section 9-15	1
50-06-0000	MESSAGE DISPLAY - DO NOT MOVE TRUCK	1
50-06-1110	SAFETY INTERLOCK SYSTEM - MED/HD CHASSIS	1
50-10-0100	CAB CONSOLE - FLOOR MOUNT - INTERNATIONAL/FREIGHTLINER - VISIONMUX/V-MUX	1
50-20-0200	BRACKET- HAVIS-SHIELDS SIREN FOR WHELEN 295-Series	1
50-40-0110	CLEARANCE LIGHTS, LED & REFLECTORS W/CENTER REAR THIRD BRAKE	1
50-40-0200	CLEARANCE LIGHTS, LED & REFLECTORS - TRAILER	1
50-50-0200	TAIL LIGHT ASSY - LED STOP/TURN/BACKUP with CHROME BEZELS	1
50-50-6000	JAKE BRAKE LIGHT ACTIVATION	1

PART NO	DESCRIPTION	QTY
50-51-9000	AUXILIARY LED TURN SIGNALS - AMBER, CENTER BODY	1
51-10-1725	SCENE LIGHT - SIDE - WHELEN 90 LED OPTI-SCENE (EA)	4
51-10-2515	SCENE LIGHT - REAR - WHELEN 90 LED OPTI-SCENE (EA)	2
51-11-0100	SCENE LIGHT - REAR REVERSE ACTIVATED - V-MUX	1
51-11-0150	SCENE LIGHT - SIDE REVERSE ACTIVATED - V-MUX	1
51-19-0110	GROUND LIGHTS - TECNIQ LED - UNDERBODY MOUNTED (EA)	7
51-19-0130	GROUND LIGHTS ACTIVATED BY TURN SIGNALS /REVERSE	1
51-50-1810	COMPARTMENT LIGHTS - LED STRIP - 24" RECESSED	6
51-50-1825	COMPARTMENT LIGHTS - LED STRIP - 36" RECESSED	8
51-55-1000	COMP'T OPEN WARNING & AUTO ACTIVATION - V-MUX	1
51-55-2000	COMP'T OPEN WARNING BUZZER	1
51-56-0100	COMP'T OPEN WARNING LIGHT - LED	1
51-65-1110	LIGHT - UNDER CABINET LED - WHITE	2
51-65-1115	SWITCH, UNDER CABINET LIGHT	2
51-65-1200	DOME LIGHT - WHELEN SUPER-LED HI/LOW INTENSITY - 8" CLEAR	4
<b>NFPA 1901 WARNING LIGHTS</b>		<b>1</b>
<b>UPPER ZONE A - FRONT CAB WARNING LIGHTS</b>		<b>1</b>
54-01-1556	WHELEN JUSTICE JE2NFPA - 56" LIGHT BAR - V-END Configuration	1
<b>LOWER ZONE A - FRONT CAB WARNING LIGHTS</b>		<b>1</b>
54-10-07RC	WHELEN C7LRC RED SURFACEMAX - CLEAR LENS W/C7FC CHROMED BEZEL (ea)	2
54-15-5000	HEADLIGHT WIG-WAG PATTERN - V-MUX	1
<b>LOWER ZONE B/D - CAB INTERSECTION WARNING LIGHTS</b>		<b>1</b>
54-20-05RC	WHELEN 50R02ZCR RED SUPER-LED - CLEAR LENS W/5TSMAC CHROME BEZEL (ea)	2
<b>LOWER ZONE B/D - SIDE BODY WARNING LIGHTS</b>		<b>1</b>
54-21-06RC	WHELEN C6LRC RED SURFACEMAX - CLEAR LENS W/C6FC CHROMED BEZEL (ea)	6
<b>LOWER ZONE C - REAR BODY WARNING LIGHTS</b>		<b>1</b>
54-25-09RC	WHELEN C9LRC RED SURFACEMAX - CLEAR LENS W/C9FC CHROMED BEZEL (ea)	2
<b>UPPER ZONE B/D - SIDE BODY WARNING LIGHTS</b>		<b>1</b>
54-30-09RC	WHELEN C9LRC RED SURFACEMAX - CLEAR LENS W/C9FC CHROMED BEZEL (ea)	4
<b>UPPER ZONE C - REAR BODY WARNING LIGHTS</b>		<b>1</b>
54-31-09RC	WHELEN C9LRC RED SURFACEMAX - CLEAR LENS W/C9FC CHROMED BEZEL (ea)	2
<b>AUDIBLE WARNING DEVICES</b>		<b>1</b>
55-22-1000	SIREN - WHELEN ELECTRONIC - 295SLSA1	1
55-30-1000	HORN/SIREN SWITCH	1
55-41-4020	SPEAKER, SIREN - FREIGHTLINER M2 - THROUGH-THE-BUMPER (EA)	1
58-50-1000	12VDC POWER STRIP - (6) TERMINALS - CAB	1
58-80-1000	BACK-UP ALARM - FEDERAL 210333	1





STREETSIDE EXTERIOR

THIS PRINT AND ALL RIGHTS TO THE DESIGN AND DETAIL THEREON ARE THE PROPERTY OF VT HACKNEY AND IS LOANED TO THE RECIPIENT SUBJECT TO RETURN UPON DEMAND. ITS CONTENTS ARE CONFIDENTIAL AND MUST NOT BE COPIED OR SUBMITTED TO OUTSIDE PARTIES FOR USE OR EXAMINATION. COPYRIGHT 2015 VT HACKNEY A COMPANY OF VT SYSTEMS

© 2015 VT HACKNEY INC  
 NOTE: ESTIMATED DIMENSIONS.  
 MEASUREMENTS DEPEND ON CHASSIS,  
 TIRES, SPRINGS AND LOADING



A company of VT Systems  
 WASHINGTON, NC 27889-0880



CUSTOM DESIGN FOR:

NJPA

CONTRACT #

DRAWN BY: EES  
 DATE: 02/01/18

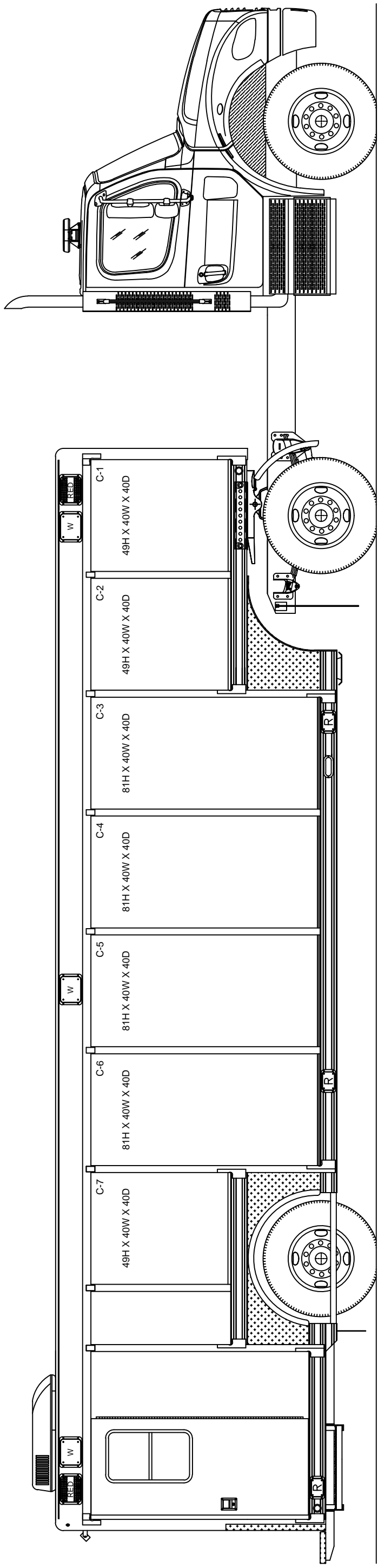
SHEET: 2 OF 4

MODEL: TC-1192

SCALE: 3/4

DRAWING NO.

REV.



CURBSIDE EXTERIOR

THIS PRINT AND ALL RIGHTS TO THE DESIGN AND DETAIL THEREON ARE THE PROPERTY OF VT HACKNEY AND IS LOANED TO THE RECIPIENT SUBJECT TO RETURN UPON DEMAND. ITS CONTENTS ARE CONFIDENTIAL AND MUST NOT BE COPIED OR SUBMITTED TO OUTSIDE PARTIES FOR USE OR EXAMINATION. COPYRIGHT 2015 VT HACKNEY A COMPANY OF VT SYSTEMS

© 2015 VT HACKNEY INC

NOTE: ESTIMATED DIMENSIONS. MEASUREMENTS DEPEND ON CHASSIS, TIRES, SPRINGS, AND LOADING.



VT Hackney  
A company of VT Systems

WASHINGTON, NC 27889-0880



CUSTOM DESIGN FOR:

NJPA

CONTRACT #

DRAWN BY EES

DATE 02/01/18

SHEET 4 OF 4

MODEL: TC-1482

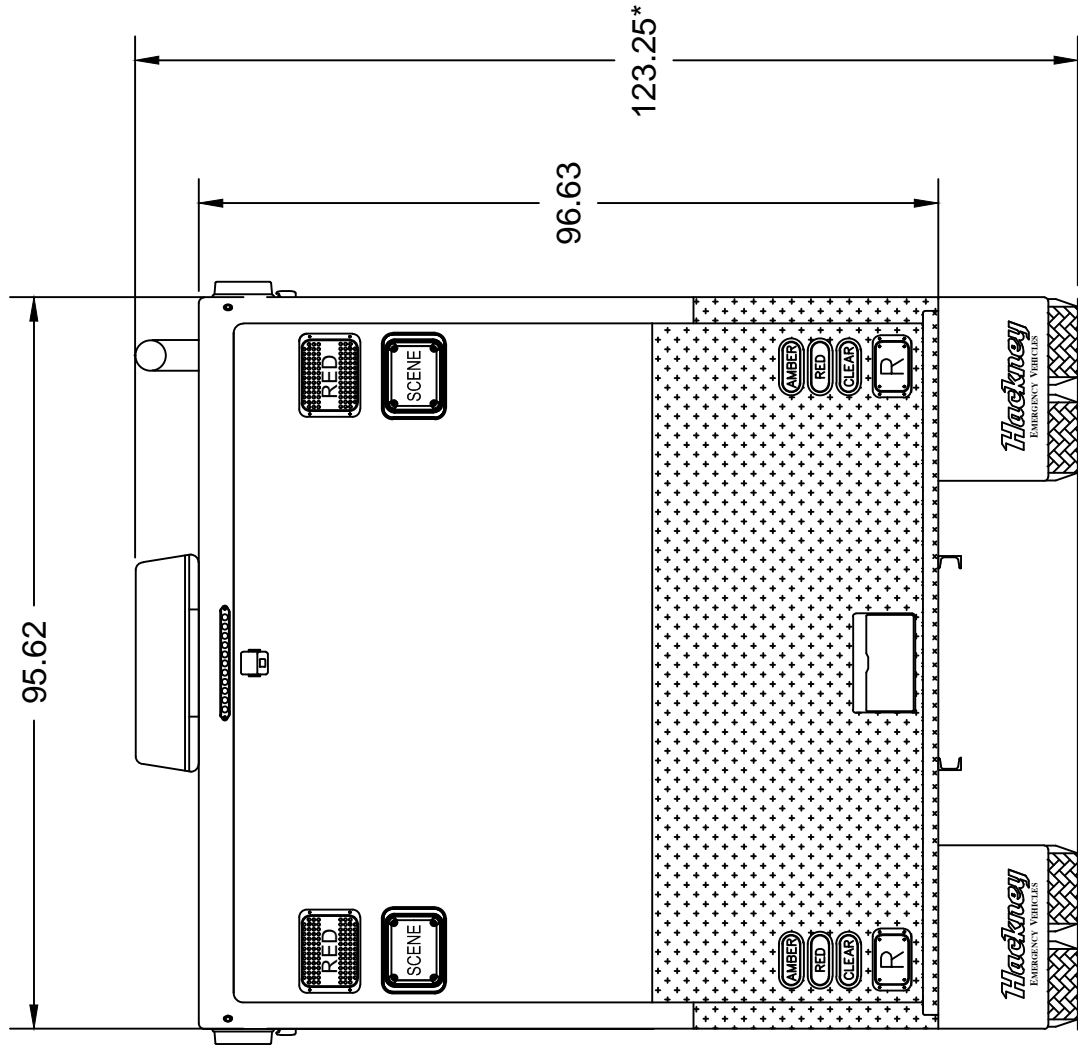
SCALE

37

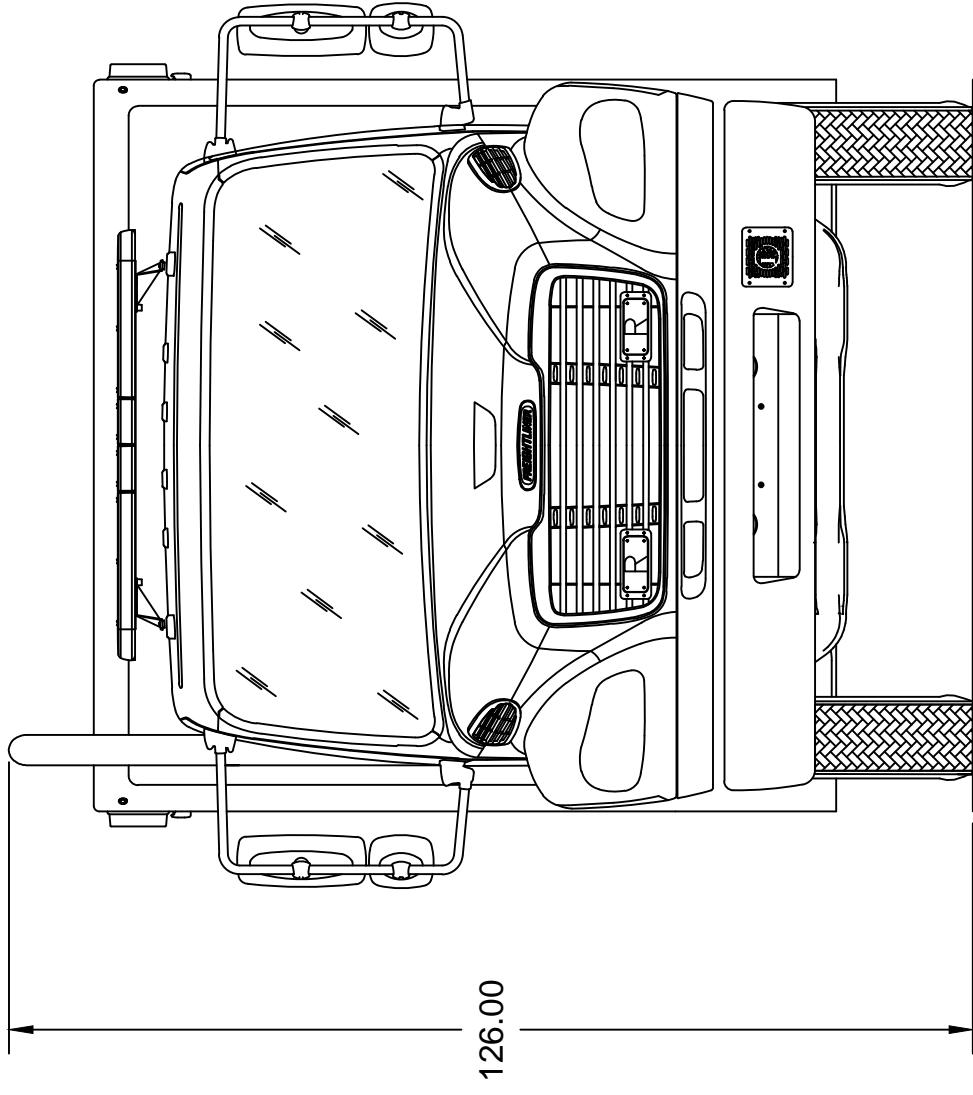
DRAWING NO.

REV.

-



REAR VIEW



FRONT VIEW

THIS PRINT AND ALL RIGHTS TO THE DESIGN AND DETAIL THEREON ARE THE PROPERTY OF VT HACKNEY AND IS LOANED TO THE RECIPIENT SUBJECT TO RETURN UPON DEMAND. ITS CONTENTS ARE CONFIDENTIAL AND MUST NOT BE COPIED OR SUBMITTED TO OUTSIDE PARTIES FOR USE OR EXAMINATION. COPYRIGHT 2015 VT HACKNEY A COMPANY OF VT SYSTEMS

© 2015 VT HACKNEY INC

NOTE: ESTIMATED DIMENSIONS.  
MEASUREMENTS DEPEND ON CHASSIS,  
TIRES, SPRINGS, AND LOADING.



WASHINGTON, NC 27889-0880

CUSTOM DESIGN FOR:

NJPA

CONTRACT #

DRAWN BY EES

DATE 02/01/18

SHEET 3 OF 4

MODEL: TC-1482

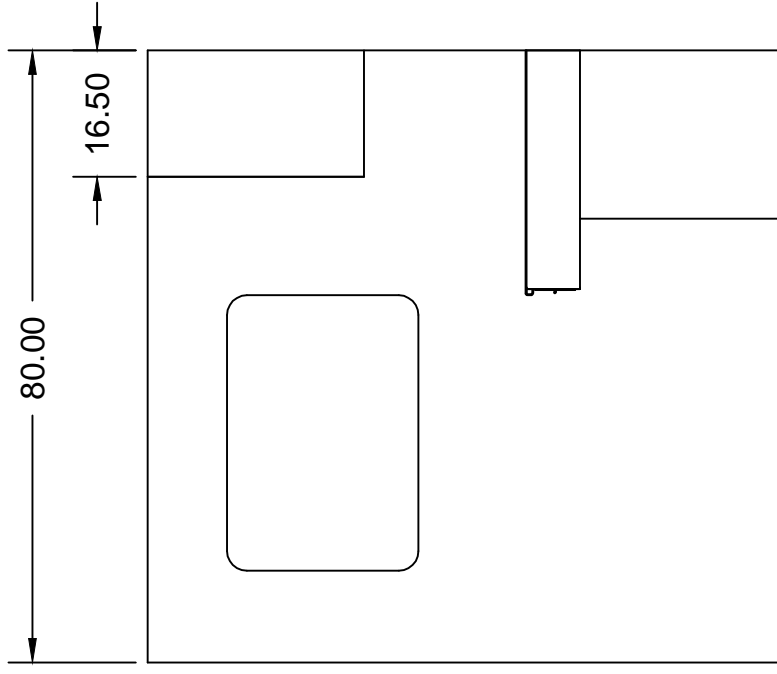
SCALE 25

DRAWING NO.

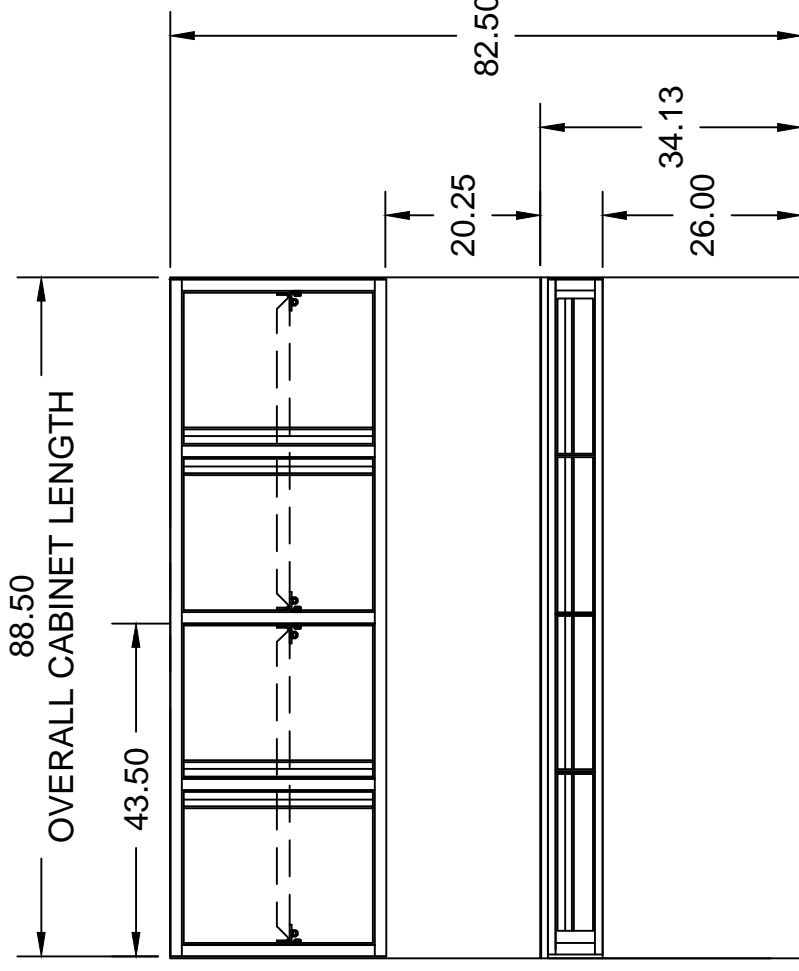
REV. -



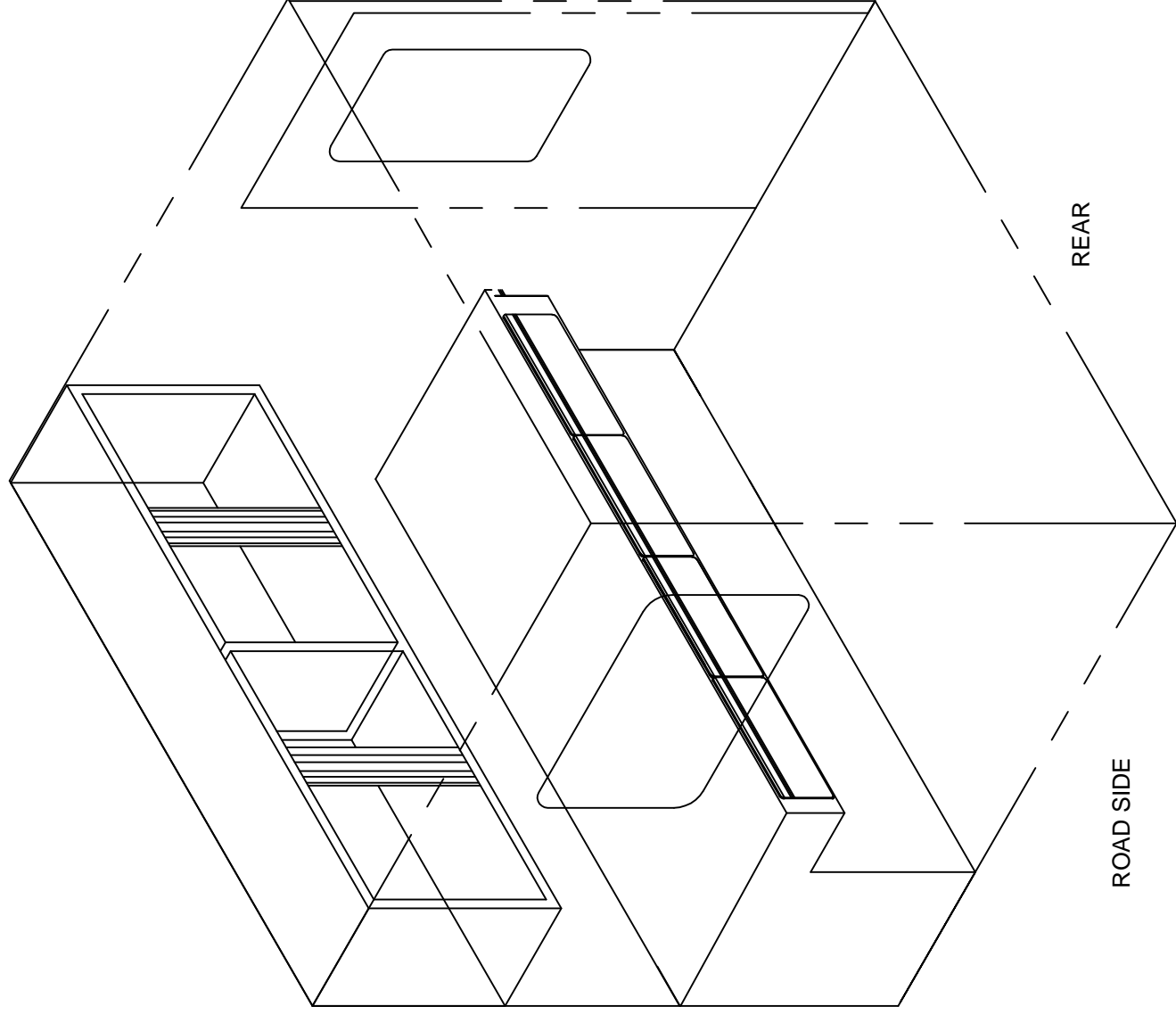




ROADSIDE WALL VIEW



FRONT WALL VIEW



THIS PRINT AND ALL RIGHTS TO THE DESIGN AND DETAIL THEREON ARE THE PROPERTY OF VT HACKNEY AND IS LOANED TO THE RECIPIENT SUBJECT TO RETURN UPON DEMAND. ITS CONTENTS ARE CONFIDENTIAL AND MUST NOT BE COPIED OR SUBMITTED TO OUTSIDE PARTIES FOR USE OR EXAMINATION. COPYRIGHT 2015 VT HACKNEY A COMPANY OF VT SYSTEMS

© 2015 VT HACKNEY INC

NOTE: ESTIMATED DIMENSIONS.  
MEASUREMENTS DEPEND ON CHASSIS,  
TIRES, SPRINGS, AND LOADING.



**VT Hackney**  
A company of VT Systems

WASHINGTON, NC 27889-0880



CUSTOM DESIGN FOR:

NJPA

CONTRACT #

DRAWN BY EES

DATE 02/01/18

SHEET 4 OF 4

MODEL: TC-1482

SCALE 25

DRAWING NO.

REV.

-